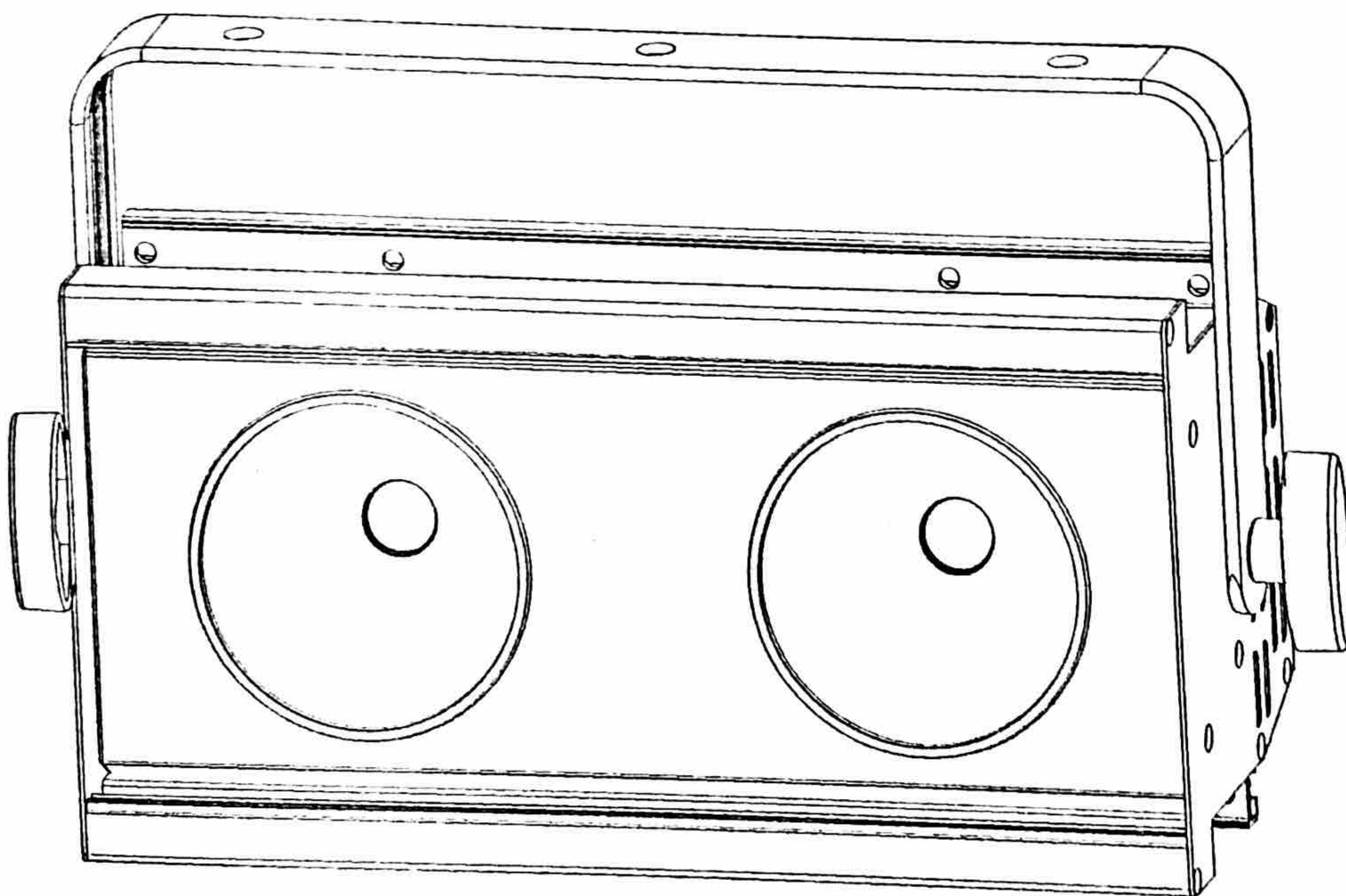


OmniSISTEM

Led Audience Blinder Light



Blinder MX-200

📖 Please read the manual before installing and using this lighting
Keep it for future reference

Catalog

Safety information.....	2
The main performance	3
Dimensions.....	4
Split joint	5
Standard part.....	5
Standard configuration handle assembly diagram	5
①Put handle in lamp groove, screw hole is centering.....	5
②Then the spacer and handle trestle stick together.....	5
④The finished impression drawing like belong picture.....	6
Button	7
DMX channel.....	7
2 channels mode	7
1 channels mode	7
A4 channels mode	7
B4 channels mode	8
Menu	8
Menu navigation.....	8
1. DMX menu	8
2. Manual dimmer menu.....	9
3. Setting menu	9
Technical Specification.....	10

check that there has been no damage caused in transportation. If the lighting has been damaged, do not use the lighting and contact your dealer or manufacturer.

This product complies with the following standards:

IEC60598-1:2003

IEC60598-2-17:1984+A2:1990

Safety information

Important

All operation and maintenance must be carried out in accordance with this user manual

Manufacturer will not with responsibility for that operation not according to this Instruction:

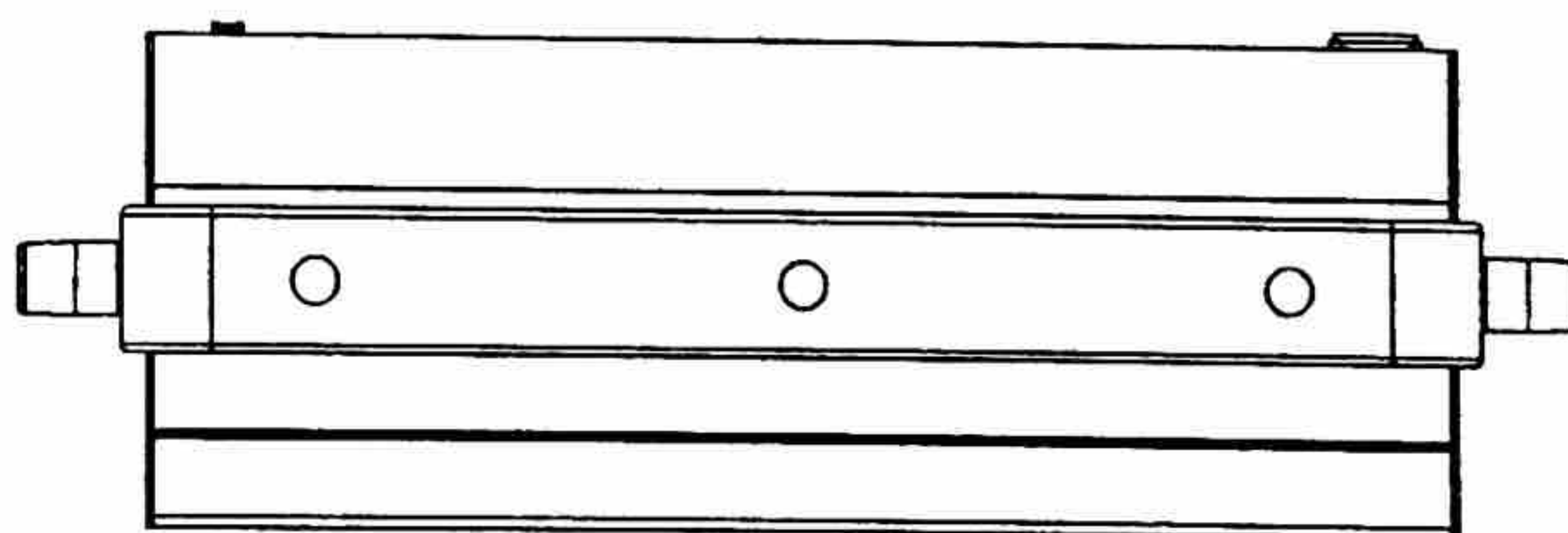
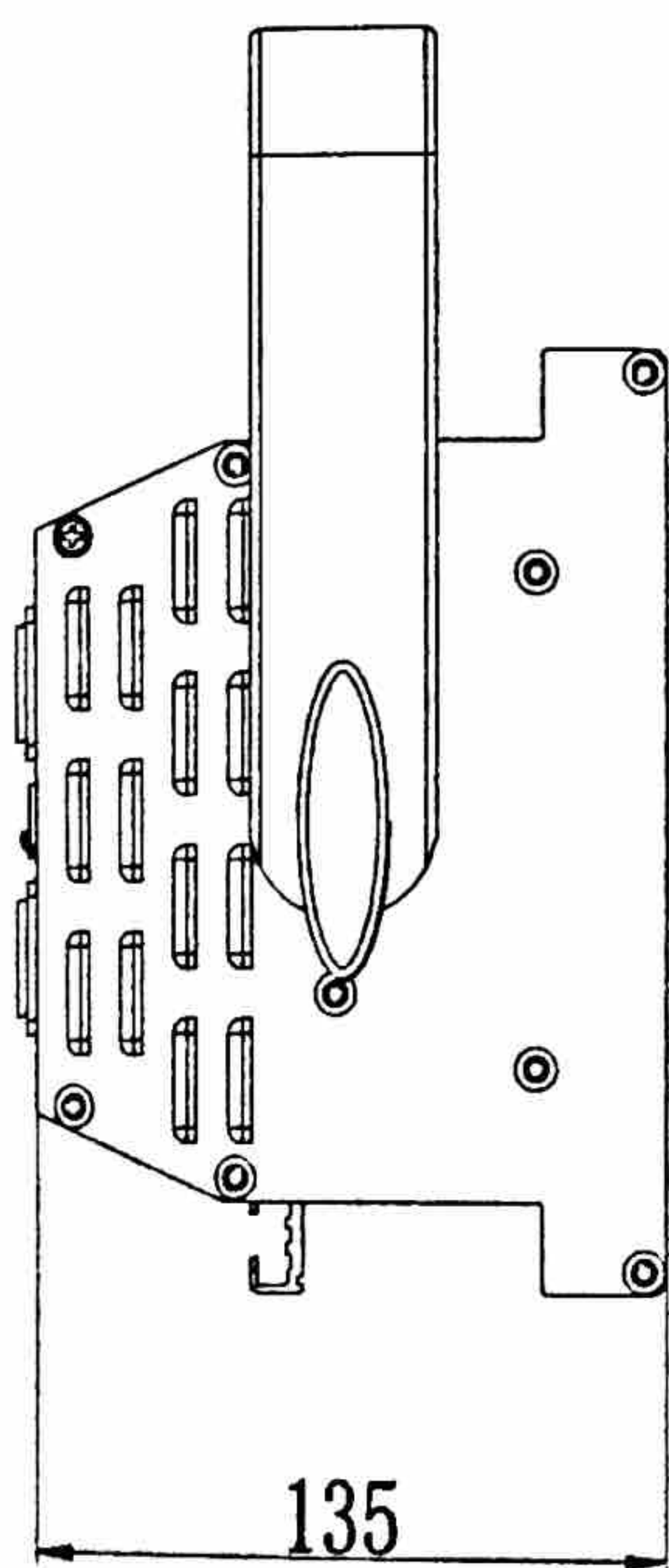
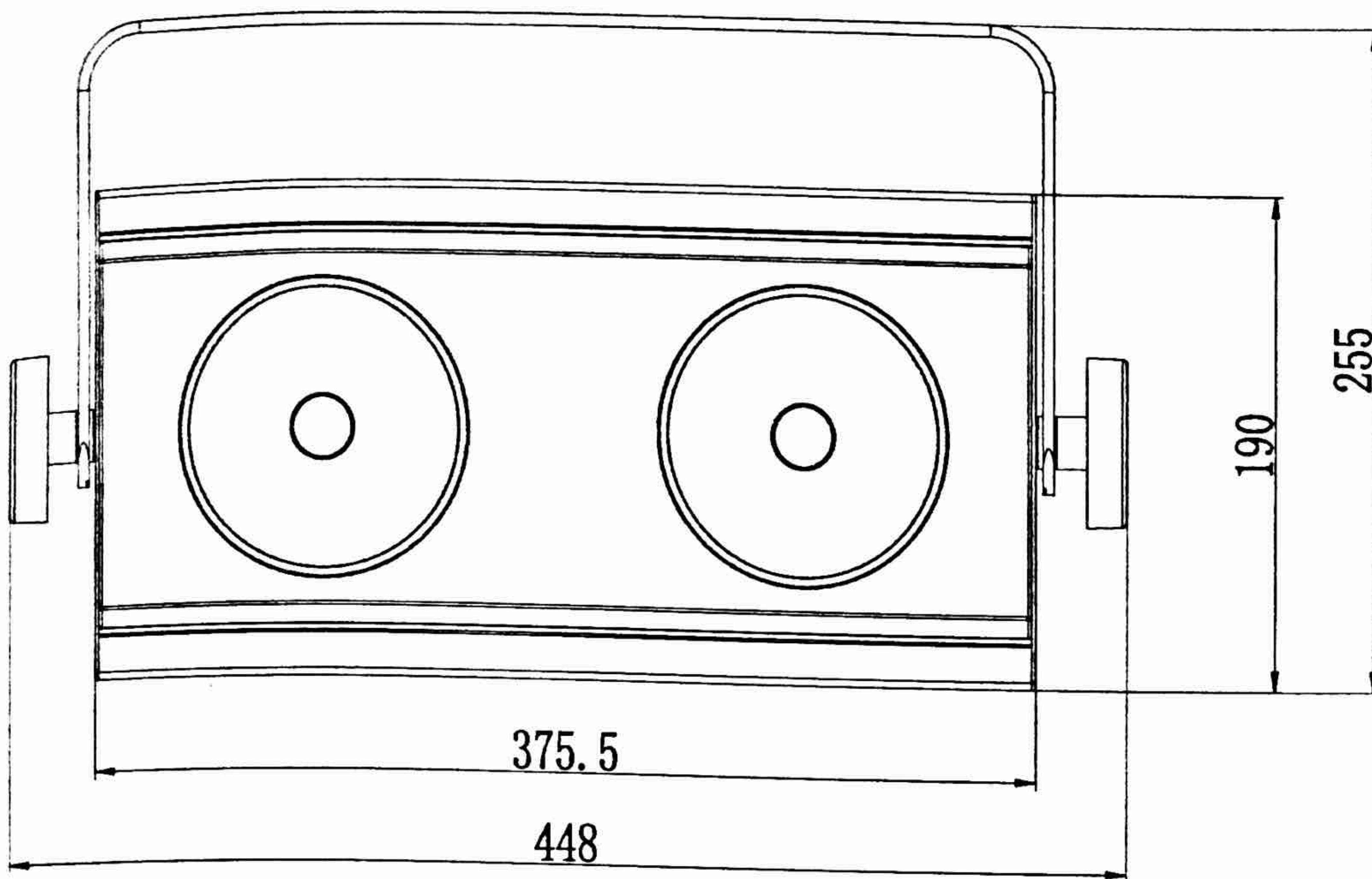
- ◆ Verify that the voltage matches the rated voltage.
- ◆ Make sure power socket is connected with earth cable well. The earth cable of this unit is Yellow/Green one.
- ◆ Do not move or vibrate the lighting while the lighting is power on.
- ◆ Always disconnect the power before attempting to open the equipment housing or carrying out any maintenance.
- ◆ Do not connect power cable of other electric products with this unit.
- ◆ Do not expose the fixture to rain or moisture.
- ◆ Verify that the feed cables are undamaged and rated for the current requirements of all connected devices before use.
- ◆ Keep all combustible materials (for example fabric, wood, paper) at least 0.5 meters away from the light. Keep flammable materials well away from the fixture.
- ◆ Avoid looking directly into the light source (especially those who suffer from epileptic fits)
- ◆ When it is thunderstorm, don't use the light and disconnect the power supply, high voltage will destroy light.

- ◆ If the ambient temperature exceeds 40 °C, please do not use this light.
- ◆ When suspending the fixture above ground level, verify that the structure can hold at least 10 times the weight of all installed devices.
- ◆ Verify that all external covers and rigging hardware are securely fastened and use an approved means of secondary attachment such as a safety cable.
- ◆ Verify that all screws are tightly fastened.

The main performance

- ①This product use CREE COB optical integrate module, light color agreement, lumen higher;. Pairing optical grade prism reflective cup; a beam of light is more accurate, the light effect is better, light effect output uniformity, no infrared and ultraviolet.
- ②Aluminum alloy shell ,firm and simple graceful, the lamp have waterproof design. The lamp head angles regulate.
- ③This product cans alone lamp use, and multi lamp use, also facility split joint line and face form.
- ④In full compliance with international standards DMX512 agreement, can alone control and mutual coupling control.
- ⑤Application field: applicable to the giant concert、theatrical performances 、television studio、entertainment places etc.

Dimensions

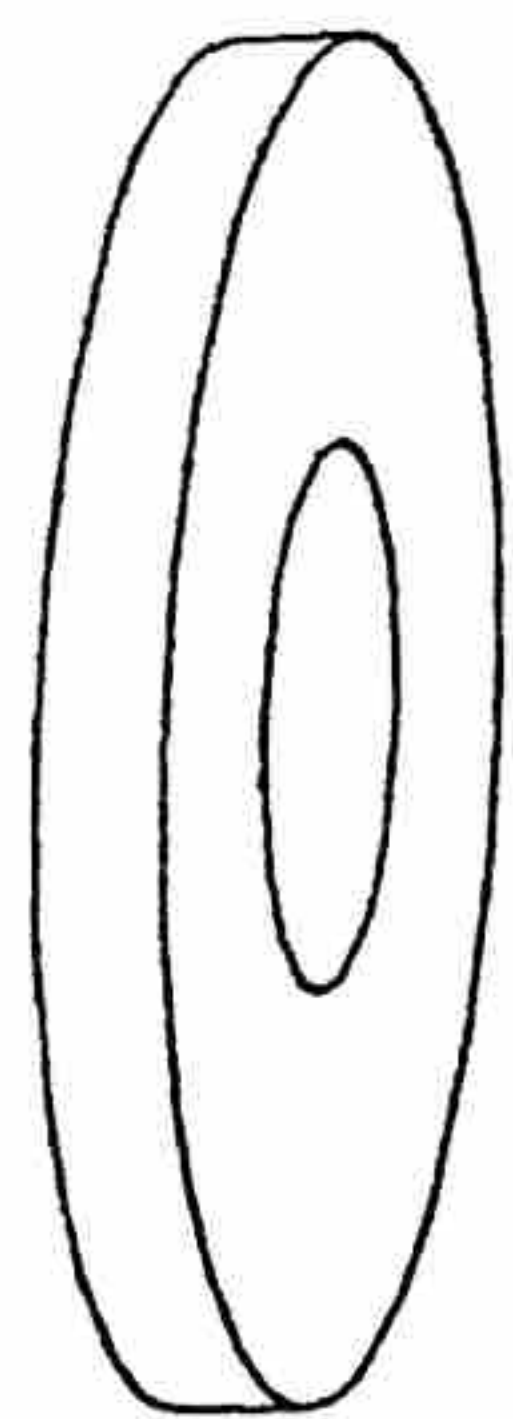


All dimensions are in millimeter

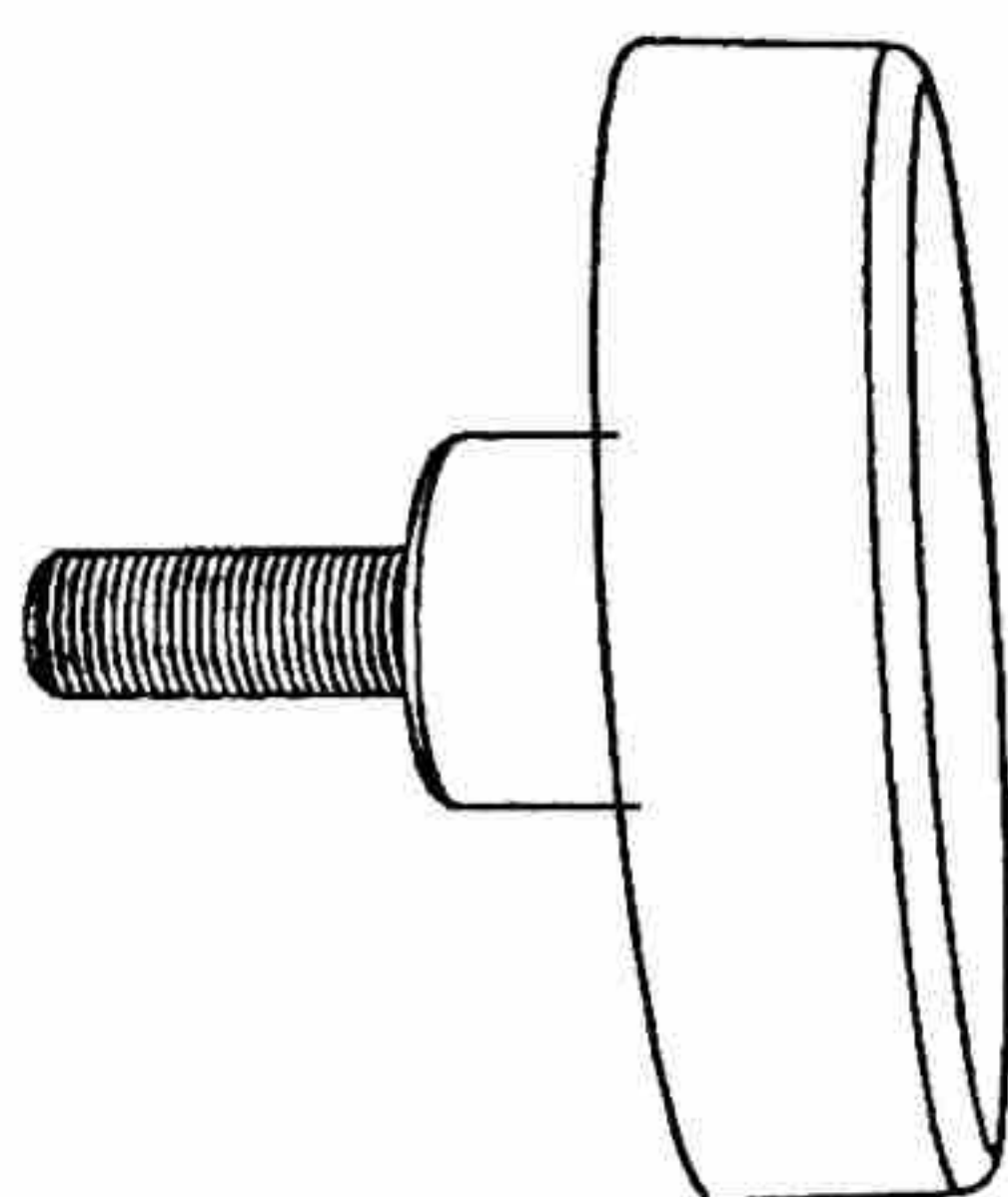
Split joint

The lightings can be stacked by the connectors and dowels

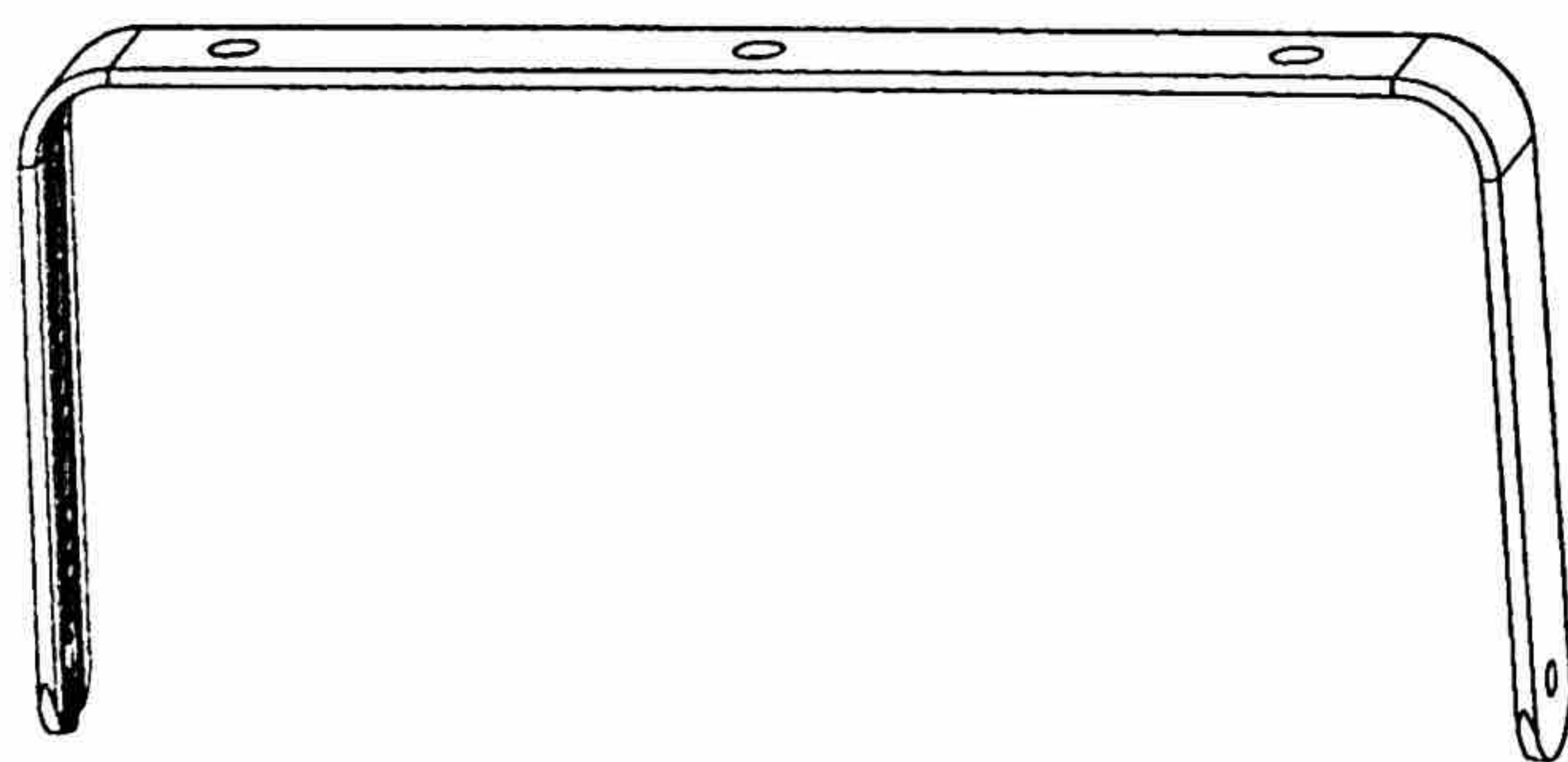
Standard part



→Spacer 2PCS



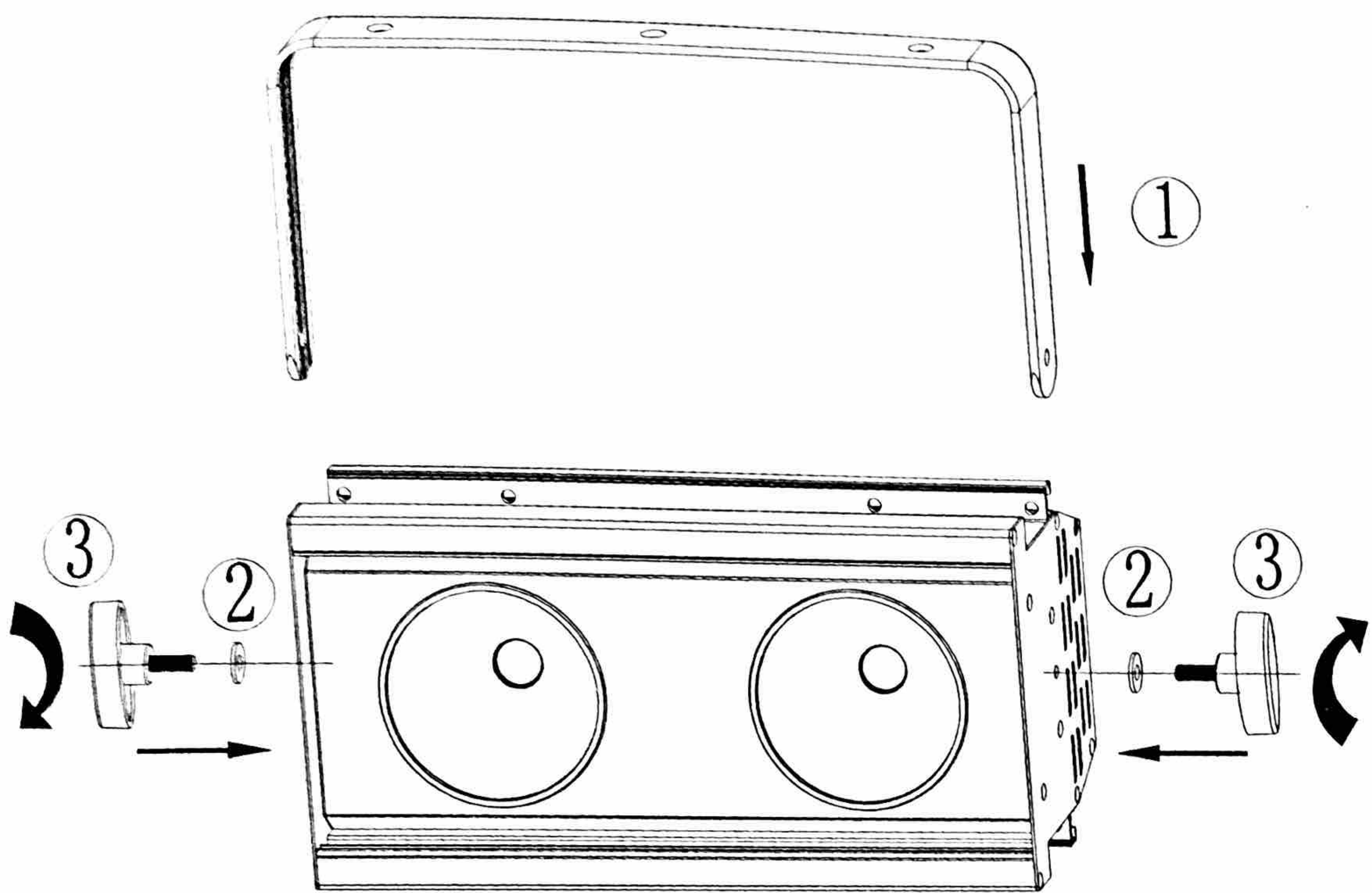
→The outer tooth bakelite knob
2PCS



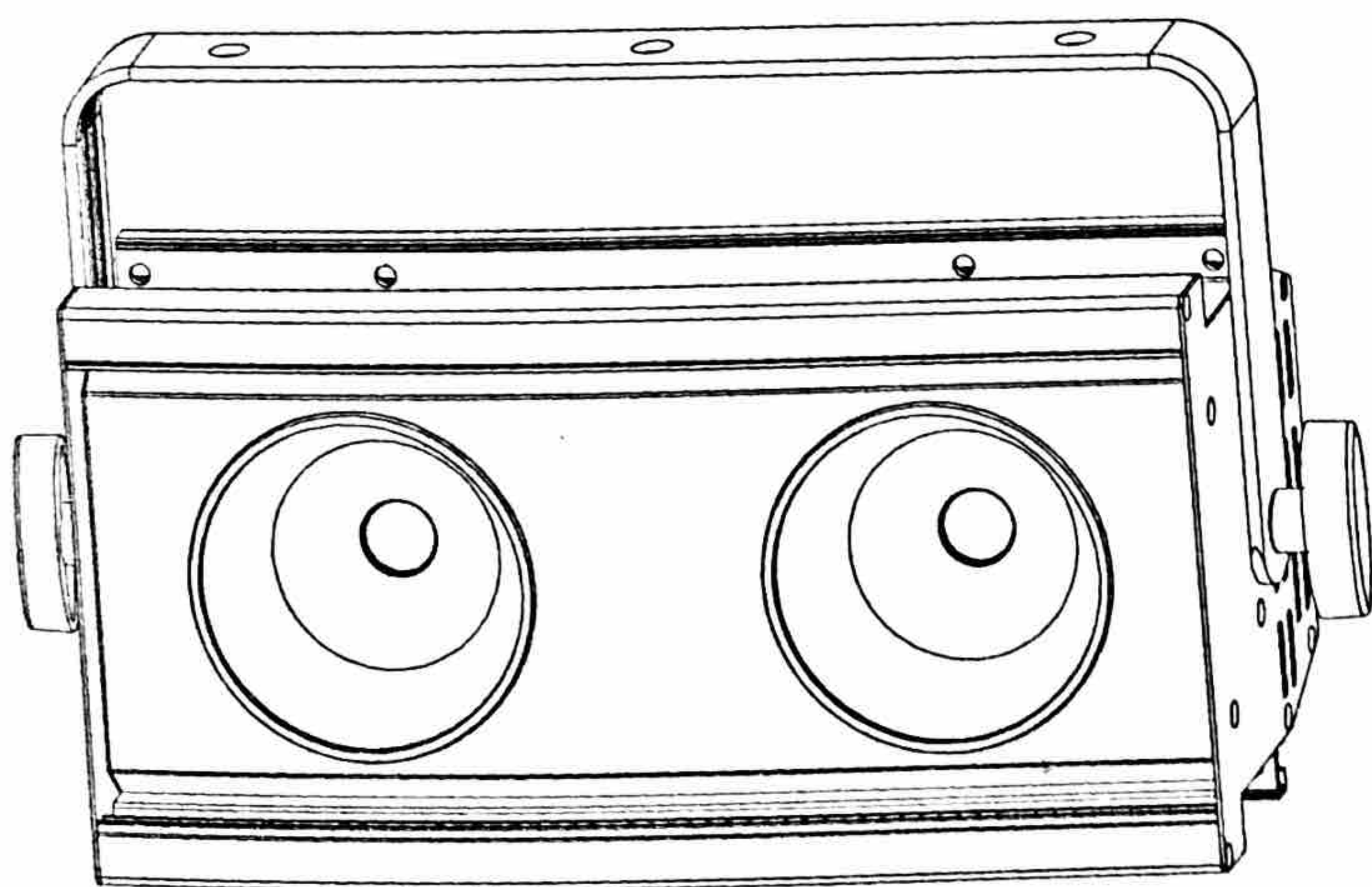
→Handle 1PCS

Standard configuration handle assembly diagram

- ①Put handle in lamp groove, screw hole is centering.
- ②Then the spacer and handle trestle stick together.
- ③The last tooth bakelite knob sprain on carriage bolts,not move carriage bolts,the handle trestle left or right 360degree. Like belong picture



④The finished impression drawing like belong picture



Button

- SET/ESC

Call the main menu, or escape the current menu (i.e. return to the upper menu and give up the selected item or parameter).
- UP:

Browse the menu item forward or increase the parameter.
- DOWN:

Browse the menu item backward or decrease the parameter.
- ENTER:

Confirm the selected item or parameter(i.e. enter the next menu, or escape the current menu and save the selected item or parameter)

DMX channel

This lighting has four channel modes, they can be selected in the DMX menu, the default setting is 2 channels mode.

2 channels mode

Channel	Value	Function
1	000-255	Light 1 dimmer
2	000-255	Light 2 dimmer

1 channels mode

Channel	Value	Function
1	000-255	Global dimmer

A4 channels mode

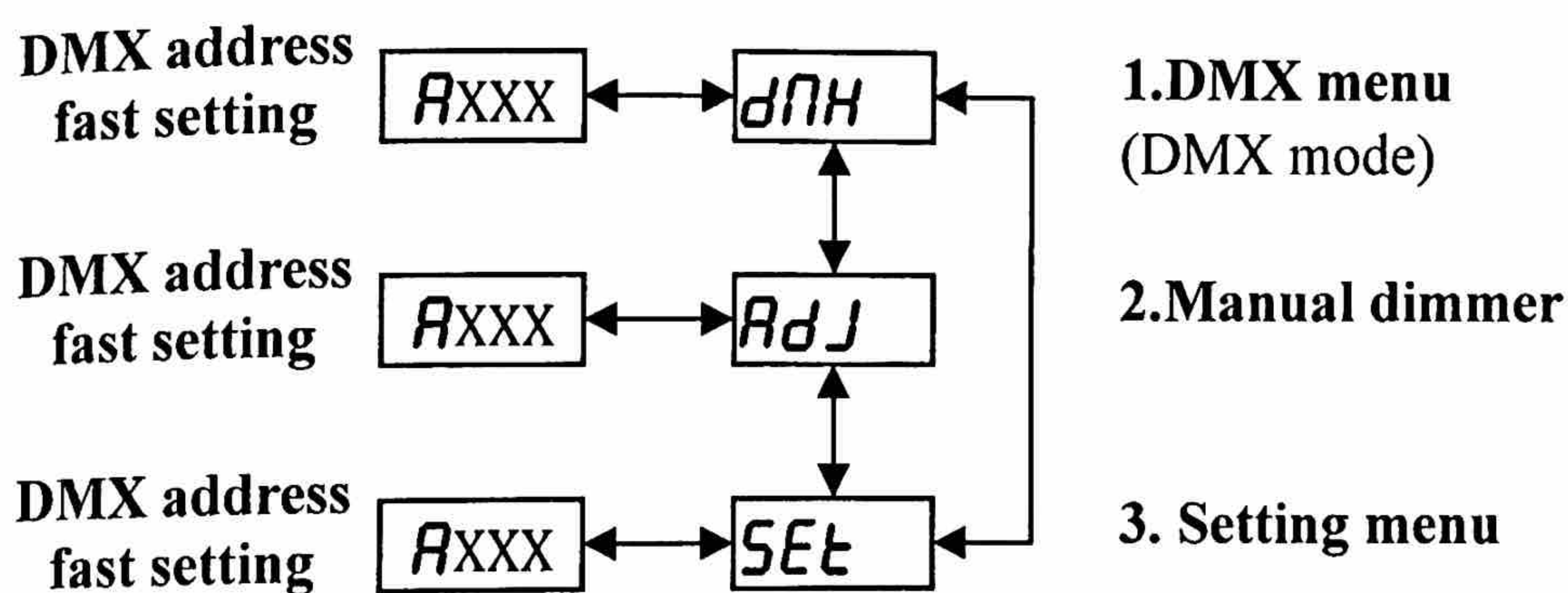
Channel	Value	Function
1	000-255	Global dimmer
2	0-5	No function
	250-255	Strobe
3	000-255	Light 1 dimmer
4	000-255	Light 2 dimmer

B4 channels mode

Channel	Value	Function
1	000-255	Light 1 Strobe
2	000-255	Light 1 dimmer
3	000-255	Light 2 Strobe
4	000-255	Light 2 dimmer

Menu

Menu navigation



1. DMX menu

Menu	Item	Options	Notes
dNH	Raddr	R001	Set DMX address
	chs	02	2 channels mode (default)
		01	1 channels mode
		A4	A4channels mode
		b4	B4 channels mode
	Ru5o Run if no DMX signal	stop	Stop (default)
		hold	Hold

2. Manual dimmer menu

Menu	Item	Options	Notes
<i>Adj</i>	<i>LEdA</i>	0~255	Light 1 dimmer
	<i>LEdB</i>	0~255	Light 2 dimmer
	<i>Stro</i>	0~255	Strobe

3. Setting menu

Menu	Item	Options	Notes
<i>Set</i>	<i>rELd</i>	<i>on</i>	Reload default setting
		<i>off</i>	Do not reload default setting
	<i>NRAL</i> Set master mode or alone mode	<i>NRSt</i> Master mode	Set one device to Master, others to DMX mode, all devices will run synchronously follow the master. Only one device can be set to master. Once press the Master to DMX mode, it exits the Master mode
		<i>SLAU</i>	Slav mode
	<i>tCSU</i> TC Switch, over temperature reduce output	<i>tNSh</i>	<i>on</i> enable TC switch function
			<i>off</i> disable TC switch function
		<i>tENP</i> pass-word protection , common user prohibited	<i>CAPt</i> Capture current temperature <i>YES/no</i>
			<i>tSEt</i> Set TC switch temperature (105) <i>YES/no</i>
	<i>SPEd</i> Dimmer speed	<i>00</i>	No delay
		<i>01</i>	1 grade delay
		<i>02</i>	2 grade delay
		<i>03</i>	3 grade delay
	

		15	15 grade delay
	FRn Fun speed	REGULATED	Automatic
		FULL	Fun speed
		LOW	Low speed
	SoFE		Software information

Technical Specification

Power supply	AC100~240V , 50/60Hz
Power consumption	220W
Light source	2 PCS 100W white LED
LED lifespan	About 50,000 hours
Color	Cool white 3000±200K /optional Warm white 5700±200K/optional
Channel	2/1/A4/B4
Protocols	DMX-512
Control mode	DMX512 , Master/Slave mode
Protection rating	IP20
Dimensions	L375.5*W135*H190 mm
Net weight	3.1kg